



重設密碼

Reset Your Password

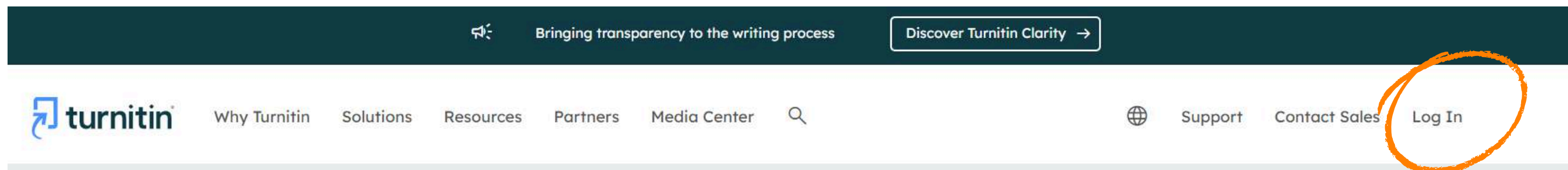


國立臺北大學圖書館
National Taipei University Library



重設密碼

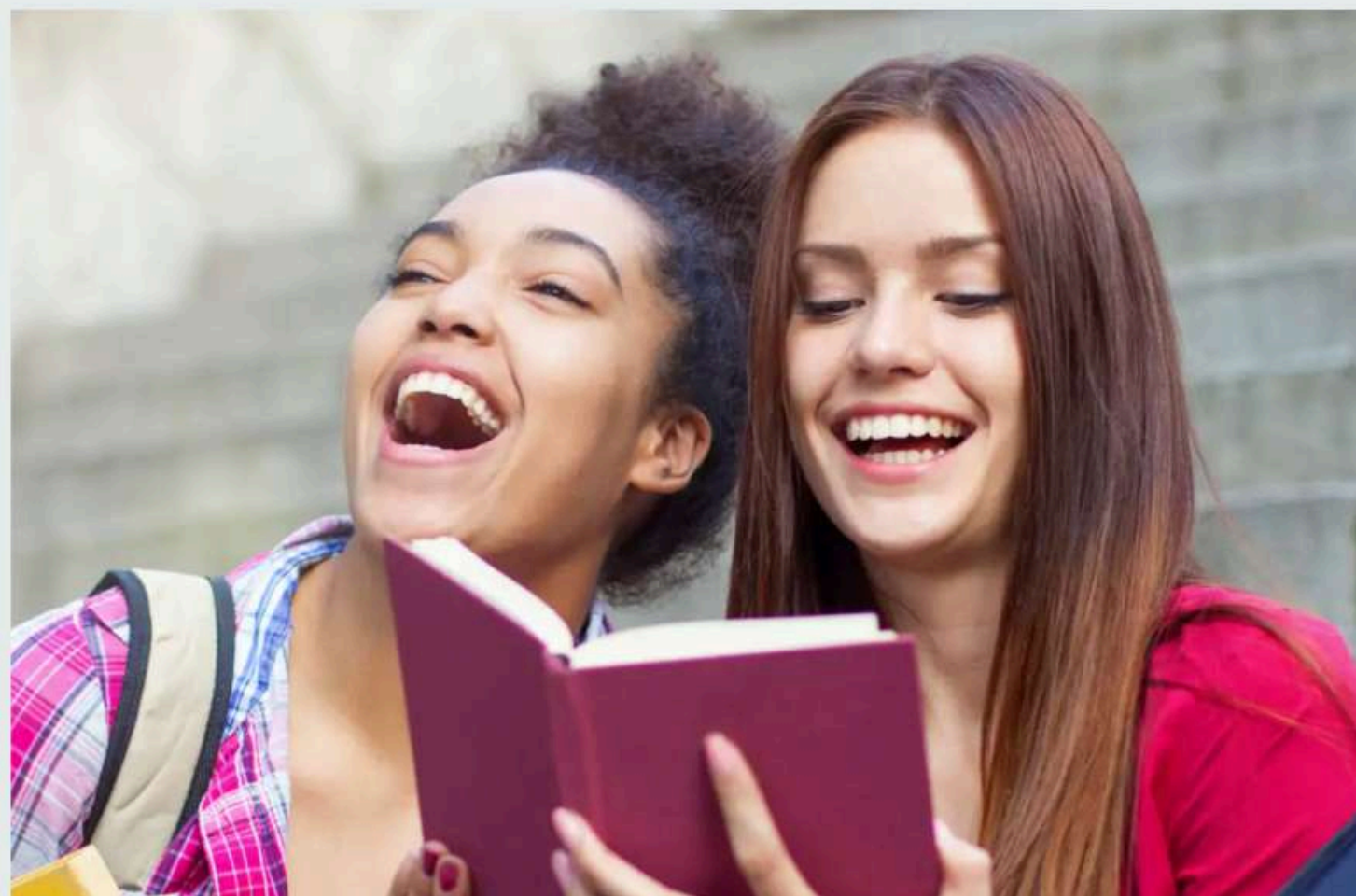
Reset Your Password



到Turnitin首頁 點Log In

Go to the Turnitin homepage and click “Log In” .

Empower students to
do their best,
original work





重設密碼

Reset Your Password



Log in to Turnitin

Email address

Password

Log in

Or



Sign in with Google



Log in with Clever

Forgotten your password? [Click here](#)

Need more help? [Click here](#)

New user? [Click here](#)

Reset User Password

Please enter the email address you used to create your user profile. Click "next" when you are done.

輸入帳號 (本校Email)

Email Address

Enter your account (your NTPU email).

s7114xxxxx@webmail.ntpu.edu.tw

If you do not know the email address for your account...

Ask your instructor (or Turnitin administrator, if you are an instructor) to look up your email address.

NOTE: Due to privacy agreements, Turnitin CANNOT release your email address - even to you. You MUST get this information from your institution.

Next

Forgotten your password? [Click here](#).



重設密碼

Reset Your Password

記得秘密問題的答案

If you remember your secret question answer.

Reset User Password

If you remember the answer to your secret question, please enter it below. Click "Next" when you are done.

If you selected your secret question in a language other than the one you are reading this in, please select your language from the list: English

Secret Question:

In what city or town did your parents meet?

Answer:

XXXXXX

回答秘密提示問題的答案

[Forgot your answer?](#)

Please note that all passwords are case-sensitive. Please check your spam, bulk or junk folder for the password reset email, as it is sometimes filtered as spam. The email will come from noreply@turnitin.com. You may need to whitelist this address with your spam blocker or administrator.

Next

[Previous](#)

Reset User Password

Please enter your new password. Your password must:

have a minimum of 12 characters

include at least one number

include upper and lower case letters

include at least one special character (~!@#\$%^&*()-_+=[]{}|;:'"<>.,?/))

Password

.....

重新設定密碼

Confirm Password

.....

Next

[Cancel](#)

Reset Password Complete

Thank you! Your password has been successfully reset. Please note your password for future use.

Log in

密碼重設完成



重設密碼

Reset Your Password

忘記秘密問題的答案

If you forgot your secret question answer.

Reset User Password

If you remember the answer to your secret question, please enter it below. Click "Next" when you are done.

If you selected your secret question in a language other than the one you are reading this in, please select your language from the list: English

Secret Question:

In what city or town did your parents meet?

Answer:

[Forgot your answer?](#)

Forgot your answer?

Please note that all passwords are case-sensitive. Please check your spam, bulk or junk folder for the password reset email, as it is sometimes filtered as spam. The email will come from noreply@turnitin.com. You may need to whitelist this address with your spam blocker or administrator.

Next

[Previous](#)

Reset User Password

If the email you provided exists in our system you will soon receive an email containing a password reset link. Please check your inbox and spam folder.

You have 24 hours to change your password using the emailed link.

到註冊信箱收信, 點擊連結重設密碼

Check your email and click the link to reset your password.

Turnitin No Reply 2

重新設定您的 Turnitin 密碼 -

您好, 若要重設您的 Turnitin 密碼, 請按一下此處, 然後遵循提供的指示進行。

重新設定您的 Turnitin 密碼

外部 收件匣 x



Turnitin No Reply <noreply@turnitin.com>

[取消訂閱](#)

寄給

您好,

若要重設您的 Turnitin 密碼, 請按一下此處, 然後遵循提供的指示進行。

如果您在按一下提供的連結時遇到困難, 您可以複製以下 URL 並貼至您的瀏覽器:

https://www.turnitin.com/login_reset.asp?lang=zh_tw&id=e264c10960a4e2205fb47278aef75a7268087b7d

此連結將在 1 個小時後過期。如果您收到表示連結已經過期的訊息, 請按一下此處以要求新的「密碼重設」連結。

您也可以複製以下 URL 並貼至您的瀏覽器, 以要求新的「密碼重設」連結:

https://www.turnitin.com/password_reset1.asp?lang=zh_tw

感謝您使用 Turnitin,

Turnitin 團隊

Click here to reset your password